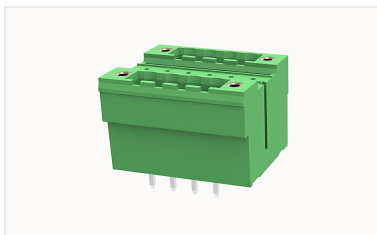


Overview

Product information



2EDGVHM-5.08-10030004532

Pluggable terminal blocks, Rated current: 10A. Rated voltage
(III/2) : 320V, pitch: 5.08mm, Color: green, Contact surface : Tin

Product advantages

- ☒ Universal installation method to ensure a high degree of flexibility in device design
- ☒ Multi-layer wire connection can achieve higher contact density

Product certification



Technical data

Product drawing

3D model

□

Processing notes

Process

Wave soldering/manual soldering

Electrical parameters UL

Rated voltage (B)	300V
Rated voltage (D)	300V
Rated current (B)	15A
Rated current (D)	10A

Electrical parameters IEC

Rated voltage	320V
Rated current	10A

Rated voltage(III/2)	320V
Rated surge voltage(III/2)	4KV

Item properties

Connection direction	90°
Type of installation	PCB welding
Pin arrangement	Double-row in a straight line
Pitch	5.08mm
Number of potentials	8
Pluggable or not	Yes
Number of rows	2

Material data

Environmental items	Compliant with REACH/RoHS
Contact material	copper
Contact zone metal surface	tin-plated
Insulation Materials	PA66
Insulating material group	I
Flammability rating	UL94V-0

Mechanical tests

Test Specification	IEC61984/ UL1059
--------------------	------------------

Environmental data

Ambient temperature (operation)	-40℃~105℃(depending on derating curve)
---------------------------------	--

Accessories

Tool

Screwdriver	/
-------------	---

Operating tool	/
----------------	---

Accessories

Coding strip	/
Bridge	/
Marking strip	/
Others	2EDG-PWP

Business data

Order number	10030004532
Packing unit	165
Minimum order quantity	30
Products weight (without packaging)	13.33