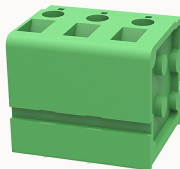


## Overview

### Product information



## DG105V-7.5-10040000090

PCB terminal blocks, Rated current: 24A, Rated voltage (III/2) 450V, Cross section: 0.5~2.5mm<sup>2</sup>, pitch: 7.5mm, connector method: Front screw connector, Color: green, Contact surface : Tin

### Product advantages

- ☒ Universal connection method to ensure a high degree of flexibility in device design
- ☒ Two solder pins reduce mechanical stress on solder joints
- ☒ Different poles can be combined through the side lock

### Product certification



## Technical data

### Product drawing

### 3D model

□

### Processing notes

Process

Wave soldering/manual soldering

### Connection capacity

Conductor cross section solid

0.5~2.5mm<sup>2</sup>

Conductor cross section flexible

0.5~2.5mm<sup>2</sup>

AWG

30~12AWG

Torque

0.4N.m

Strip length

12mm

### Electrical parameters UL

Rated voltage (B)	300V
Rated voltage (D)	300V
Rated current (B)	20A
Rated current (D)	10A

#### Electrical parameters IEC

Rated voltage	450V
Rated current	24A
Rated voltage(III/2)	450V
Rated power frequency voltage(1min)	2.5KV

#### Item properties

Connection direction	90°
Type of installation	PCB welding
Pin arrangement	Double-row in a straight line
Connection method	Screw connection
Screwdriver	Slotted screwdriver
screw thread	M2.5
Pitch	7.5mm
Number of potentials	3
Pluggable or not	no
Number of rows	1

#### Material data

Environmental items	Compliant with REACH/RoHS
Contact material	copper
Contact point metal surface	tin-plated
Insulation Materials	PA66

Insulating material group	I
Flammability rating	UL94V-0
Mechanical tests	
Test Specification	UL1059/IEC60998
Environmental data	
Ambient temperature (operation)	-40°C~105°C(depending on derating curve)

Accessories	
Tool	
Screwdriver	0.6x3.5mm, Slotted screwdriver
Operating tool	/
Accessories	
Coding strip	/
Bridge	/
Marking strip	/
Others	/

Business data	
Order number	10040000090
Packing unit	500
Minimum order quantity	30
Products weight (without packaging)	12.014