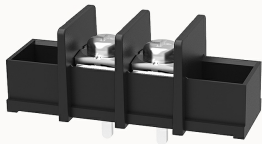


Overview

Product information

**DG65C-A-12020000463**

Single-layer PCB barrier terminal blocks, Rated current: 30A. Rated voltage (UL) : 300V, Cross section: 22~10AWG, pitch: 11.00mm, Color: black, Contact surface: Tin

Product advantages

- ☒ Screw connection for worldwide use
- ☒ Fence type wiring structure, stable and reliable connection
- ☒ Solder plate mounting for electrical connection of the device to the PCB

Product certification



Technical data

Product drawing

3D model

[□](#)

Processing notes

Process

Wave soldering/manual soldering

Connection capacity

AWG

22~10AWG

Torque

1.2N.m

Electrical parameters UL

Rated voltage (B)

300V

Rated voltage (D)

300V

Rated current (B)

30A

Rated current (D)	10A
-------------------	-----

Electrical parameters IEC

Rated current	300V
	32A

Item properties

Type of installation	PCB welding
Pin arrangement	Single row in a straight line
Connection method	Screw connection
Screwdriver	slotted-phillips screwdriver
screw thread	M4
Pitch	11mm
Number of potentials	2
Pluggable or not	no
Number of rows	1

Material data

Environmental items	Compliant with REACH/RoHS
Contact material	Copper alloy
Contact point metal surface	tin-plated
Insulation Materials	PA66
Insulating material group	I
Flammability rating	UL94V-0

Mechanical tests

Test Specification	UL1059
--------------------	--------

Environmental data

Ambient temperature (operation)	-40℃~105℃(depending on derating curve)
---------------------------------	--

Accessories

Accessories

Business data	
Order number	12020000463
Packing unit	100
Minimum order quantity	/
Products weight (without packaging)	10