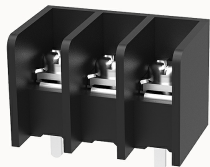


Overview

Product information



DG46-DB-12030000067

Single-layer PCB barrier terminal blocks, Rated current: 20A. Rated voltage (UL): 600V, Cross section: 24-12AWG, pitch: 8.8mm, Color: black, Contact surface: Tin

Product advantages

- ☒ Screw connection for worldwide use
- ☒ Fence type wiring structure, stable and reliable connection
- ☒ Solder plate mounting for electrical connection of the device to the PCB

Product certification



Technical data

Product drawing

3D model

□

Processing notes

Process

Wave soldering/manual soldering

Connection capacity

AWG

24~12AWG

Electrical parameters UL

Rated voltage (B)

600V

Rated voltage (C)

600V

Rated voltage (D)

600V

Rated current (B)

20A

Rated current (D)	5A
Rated current (C)	20A

Electrical parameters IEC

Rated current	1000V
	32A

Item properties

Type of installation	PCB welding
Pin arrangement	Double-row of misalignment
Connection method	Screw connection
Screwdriver	slotted-phillips screwdriver
screw thread	M3.5
Pitch	8.8mm
Number of potentials	3
Pluggable or not	no
Number of rows	1

Material data

Environmental items	Compliant with REACH/RoHS
Contact material	copper
Contact point metal surface	tin-plated
Insulation Materials	PA66
Insulating material group	I
Flammability rating	UL94V-0

Mechanical tests

Test Specification	UL1059
--------------------	--------

Environmental data

Ambient temperature (operation)

-40°C~105°C(depending on derating curve)

Accessories

Accessories

Business data

Order number	12030000067
Packing unit	450
Minimum order quantity	/
Products weight (without packaging)	10.5