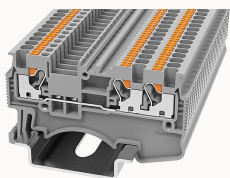


## Overview

### Product information



## DS1.5-TW-11040000077

Push-in Din-Rail TB, connector method: Push-in connector, Rated voltage : 500 V, Rated current : 17.5 A, Number of connectors: 3, Number of potentials: 1, Cross section: 0.14 mm<sup>2</sup> - 1.5 mm<sup>2</sup>, AWG: 26 - 14, Width: 3.5 mm, Color: gray, Mounting type: NS35/7.5, NS35/15

### Product advantages

- ☑ Push-in connection technology, tool-free operation, more convenient and faster;
- ☑ With orange wire button, one word or cross screwdriver can release wire.
- ☑ Equipped with dual-channel bridge wells, circuit connection testing is more flexible.
- ☑ Unique plug-in bridge, high circuit connection efficiency.
- ☑ Optional marker to avoid wire mis-inserting.
- ☑ Equipped with test holes for easy testing of the circuit.

### Product certification



## Technical data

### Product drawing

### 3D model

□

### UL Electrical parameters

Rated voltage	300V
Rated current	15A

### Wiring data

Conductor cross section flexible (ferrule without plastic sleeve)	0.14-1.5mm <sup>2</sup>
Conductor cross section flexible (ferrule with plastic sleeve)	0.14-0.5mm <sup>2</sup>
2 flexible conductors with a TWIN ferrule	/

Strip length	8~10mm
Conductor cross section solid	0.14~1.5mm <sup>2</sup>
Conductor cross section flexible	0.14~1.5 mm <sup>2</sup>
Conductor cross section solid AWG	26~14

#### Environmental conditions

Ambient temperature (storage / transport)	-25℃~60℃
Ambient temperature (operation)	-40 °C ~ 105 °C (depending on derating curve)
Relative humidity (storage/transport)	25%~75%

#### IEC Electrical parameters

Rated voltage (III / 3)	500V
Rated current (III / 3)	17.5A
Rated surge voltage	6KV

#### Safety test

Anti-finger touch	Passed the test
-------------------	-----------------

#### Mechanical performance test

Mechanical strength	Passed the test
Fixing support	Passed the test
Rotational Pull Test	Passed the test

#### Environmental protection

REACH SVHC	Lead 7439-92-1
RoHS	No excessive harmful substances

#### Electrical performance test

Voltage drop	≤3.2mV
Temperature rise test	≤45 K

#### Dimension

Height	24.6mm
NS 35/7,5 Height	32.1mm
End plate width	1.5mm
NS 35/15 Height	39.6mm
length	54mm
width	3.5mm

#### Overview

Insulating material group	I
standard test	IEC60947-7-1
Connection type	In line connection
Number of rows	1
number of connections	3
Open-end side panels	Yes
Insulation Materials	PA
Flame retardant grade, in line with UL 94	V0

#### Accessories

##### Marker

Top marker	ZB3.5 / ZS3.5
Side marker	ZSF3.5
Marker support	DTH3.5-25x3.5 / DTH3.5-25x12

##### Accessories

Slotted screwdriver size (Blade thickness x Width) mm	0.4x2.5
Bridge	DFBXX-3.5
End cover	D-DS1.5-TW

Installation

End clamp	E-WS N / E-PC-1100A
Terminal strip marker support	KLM3-20x8 / KLM3-44x8 / DBE-1 / DBE-2
DIN rail	NS35/7.5-1000-00A(H)

Business data

Order number	11040000077
Packing unit	100
Minimum order quantity	100
Products weight (without packaging)	4.043