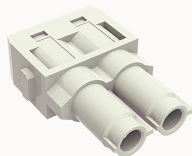


Overview

Product information



DMK7-002-F(14-22mm²)-21020000271

Heavy-duty insert, Number of contacts: 2, Dimension: 1 module Spaces, Rated voltage : 1000V, Rated current: 70A, Female insert, axial Screw connector

Product advantages

- ☑ Axial Screw connection technology, applicable to a wide range of wire specifications;
- ☑ Less materials, easy to manage;
- ☑ Modular products, easy to assemble and maintain .

Product certification



Technical data

Product drawing

3D model

□

Marking

classification	Insert
Series	DM

versions

Connection method	Axial screw connection
Female/Male	Female
Dimension	1 module
Number of positions	2
PE Contacts	No

Material characteristics

Material (insert)	Polycarbonate (PC)
Materia (Contact)	Copper alloy
Surface (Contact)	Silver plated
Flammability rating	V-0
color	Grey/White (RAL 7032)
RoHS	Comply with RoHS exemptions

Electrical parameters

Rated current	70A
	1000V
Rated pulse voltage	8KV
Pollution level	3
On the basis of UL /CSARated current	600V
Insulation resistance	≥10000MΩ
Contact resistance	≤0.5mΩ
Temperature range	-40℃~+125℃
working life-mating cycles	≥500 time
Rated torque	2N.m(6mm²) 3N.m(10mm²) 4N.m(16mm²) 5N.m(22mm²)
Conductor cross sections (mm²)	14-22mm²
Conductor cross sections(AWG)	7-5AWG

Standards

Connection meets standards	DIN EN 60664 DIN EN 61984
----------------------------	---------------------------

Accessories

Accessories

Screwdriver	/
-------------	---

Business data	
Order number	21020000271
Packing unit	100
Minimum order quantity	5
Products weight (without packaging)	29.5