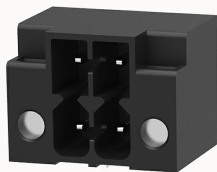


## Overview

### Product information



**15EDGRHCM-THR-3.5-10030009672**

Pluggable terminal blocks, Rated current: 9.5A. Rated voltage  
(III/2) : 200V, pitch: 3.5mm, Color: Black, Contact surface : Tin

### Product advantages

- ☒ Suitable for THR welding process
- ☒ Universal installation method to ensure a high degree of flexibility in device design
- ☒ Multi-layer wire connection can achieve higher contact density

### Product certification



## Technical data

### Product drawing

### 3D model

□

### Packaging information

Type of packaging

box-packed

### Processing notes

Process

Reflow soldering/wave soldering/manual soldering

### Electrical parameters UL

Rated voltage (B)

150V

Rated current (B)

8A

Rated current (C)

8A

### Electrical parameters IEC

|                            |       |
|----------------------------|-------|
| Rated voltage              | 200V  |
| Rated voltage(III/3)       | 80V   |
| Rated current              | 9.5A  |
| Rated voltage(III/2)       | 200V  |
| Rated voltage(II/2)        | 320V  |
| Rated surge voltage(III/3) | 2.5KV |
| Rated surge voltage(III/2) | 2.5KV |
| Rated surge voltage(II/2)  | 2.5KV |

#### Item properties

|                      |                               |
|----------------------|-------------------------------|
| Connection direction | 0°                            |
| Type of installation | PCB welding                   |
| Pin arrangement      | Double-row in a straight line |
| Pitch                | 3.5mm                         |
| Number of potentials | 4                             |
| Pluggable or not     | Yes                           |
| Number of rows       | 2                             |

#### Material data

|                             |                                      |
|-----------------------------|--------------------------------------|
| Environmental items         | Compliant with REACH/RoHS            |
| Contact material            | copper                               |
| Contact point metal surface | tin-plated                           |
| Contact zone metal surface  | tin-plated                           |
| Insulation Materials        | High temperature resistant materials |
| Insulating material group   | IIIa                                 |
| Flammability rating         | UL94V-0                              |

#### Mechanical tests

|                    |                 |
|--------------------|-----------------|
| Test Specification | IEC60947/UL1059 |
|--------------------|-----------------|

#### Environmental data

|   |  |
|---|--|
| Relative humidity (storage/transport)     | 30% ~ 70%                              |
| Ambient temperature (assembly)            | -5℃~100℃                               |
| Ambient temperature (operation)           | -40℃~130℃(depending on derating curve) |
| Ambient temperature (storage / transport) | -40℃~70℃                               |

#### Accessories

##### Tool

|                |   |
|----------------|---|
| Screwdriver    | / |
| Operating tool | / |

##### Accessories

|               |              |
|---------------|--------------|
| Coding strip  | 15EDGKNH-PWI |
| Bridge        | /            |
| Marking strip | /            |
| Others        | /            |

#### Business data

|                                     |             |
|-------------------------------------|-------------|
| Order number                        | 10030009672 |
| Packing unit                        | 2000        |
| Minimum order quantity              |             |
| Products weight (without packaging) | 1.05        |