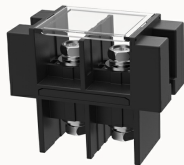


Overview

Product information



DG250-A-12010001127

Up and down transfer terminal, Rated current: 200A, Rated voltage (UL): 1000V, Croos section: 6~250kcmil, Pitch: 27mm, Color: black, contact surface: Ni

Product advantages

- ☒ Screw connection for worldwide use
- ☒ Barrier wiring structure, stable and reliable connecion
- ☒ High current eletrical connections at power end can be met

Product certification



Technical data

Product drawing

3D model

□

Signal feedback

HVIL

Yes

Electrical parameters UL

Rated voltage

1000V

Connection capacity

AWG

6~250kcmil

Torque

6.0N.m

Item properties

Connection direction

90°

Type of installation	panel
Connection method	Screw connection
Screwdriver	Phillips screwdriver
screw thread	M8
Pitch	27mm
Number of potentials	2
Pluggable or not	no
Number of rows	1

Material data

Environmental items	Compliant with REACH/RoHS
Contact material	Copper alloy
Contact point metal surface	Nickel plating
Insulating material group	IIIa
Flammability rating	UL94V-0

Mechanical tests

Test Specification	UL1059
--------------------	--------

Environmental data

Ambient temperature (operation)	-40°C~120°C(depending on derating curve)
---------------------------------	--

Accessories

Business data

Order number	12010001127
Packing unit	12
Minimum order quantity	12

Products weight (without packaging)	2500
-------------------------------------	------