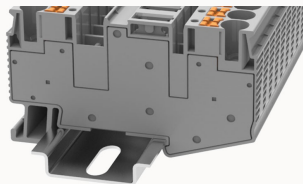


## Overview

### Product information



### DS6-TG-11040000204

Disconnect terminal blocks, connector method: Push-in connector, Rated voltage : 500 V, Rated current : 20 A, Number of connectors: 2, Number of potentials: 1, Cross section: 0.2 mm<sup>2</sup> - 10 mm<sup>2</sup>, AWG: 20 - 8, Width: 8.2 mm, Color: gray, Mounting type: NS35/7.5, NS35/15

### Product advantages

- ☑ Disconnect terminal blocks.
- ☑ Push-in connection technology, tool-free operation, more convenient and faster;
- ☑ With orange wire button, one word or cross screwdriver can release wire.
- ☑ The circuit can be disconnected, measured, controlled easily by operate the knife disconnector.
- ☑ Equipped with test holes on both sides of the breaking point, convenient for testing the circuit.
- ☑ Snap-on knife disconnector to prevent accidental disconnection.
- ☑ Universal breaking area to achieve different functions, can insert breaking plug, component plug, fuse plug.

### Product certification



## Technical data

### Product drawing

### 3D model

□

### IEC Electrical parameters

Rated current (III / 3)

20A

### UL Electrical parameters

Rated voltage

300V

Rated current

20A

### Wiring data

Conductor cross section flexible (ferrule without plastic sleeve)

0.5-6mm<sup>2</sup>

Conductor cross section flexible (ferrule with plastic sleeve)	0.5-6mm <sup>2</sup>
2 flexible conductors with a TWIN ferrule	0.5-2.5mm <sup>2</sup>
Strip length	10~12mm
Conductor cross section solid	0.5~10mm <sup>2</sup>
Conductor cross section flexible	0.5~6mm <sup>2</sup>
Conductor cross section solid AWG	20~8

#### Environmental conditions

Ambient temperature (storage / transport)	-25℃~60℃
Ambient temperature (operation)	-40℃ ~ 105℃ (depending on derating curve)
Relative humidity (storage/transport)	25%~75%

#### IEC Electrical parameters

Rated voltage (III / 3)	500V
Rated surge voltage	6KV

#### Safety test

Anti-finger touch	Passed the test
-------------------	-----------------

#### Mechanical performance test

Mechanical strength	Passed the test
Fixing support	Passed the test
Rotational Pull Test	Passed the test

#### Environmental protection

REACH SVHC	Lead 7439-92-1
RoHS	No excessive harmful substances

#### Electrical performance test

Voltage drop	≤3.2mV
--------------	--------

Temperature rise test	≤45 K
-----------------------	-------

#### Dimension

NS 35/7,5 Height	43.5mm
End plate width	/
NS 35/15 Height	51mm
length	74.2mm
width	8.2mm
Height	36mm

#### Overview

Insulating material group	I
standard test	IEC60947-7-1
Connection type	In line connection
Number of rows	1
number of connections	2
Open-end side panels	no
Insulation Materials	PA
Flame retardant grade, in line with UL 94	V0

#### Accessories

##### Marker

Top marker	ZSF8
Side marker	ZSF8
Marker support	/

##### Accessories

Slotted screwdriver size (Blade thickness x Width) mm	0.8x4
---	-------

Bridge	DFBXX-8.2
End cover	/
Matching accessories	DS-DI / DS-CO / DS-FU5 / DS-FU5-LD24

#### Installation

End clamp	E-WS N / E-PC-1100A
Terminal strip marker support	KLM3-20x8 / KLM3-44x8 / DBE-1 / DBE-2
DIN rail	NS35/7.5-1000-00A(H)

#### Business data

Order number	11040000204
Packing unit	50
Minimum order quantity	50
Products weight (without packaging)	20.52