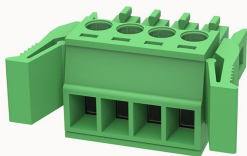


## Overview

### Product information



**15EDGKG-3.5-10010008888**

Pluggable Terminal Blocks, Rated current: 7A, Rated voltage (U<sub>I/2</sub>): 250V, pitch: 3.5mm, Color: green, Contact surface: Tin

### Product advantages

- ☒ Adapt to multi-type sockets, device design is highly flexible
- ☒ Keying requirements can be met
- ☒ Universal installation method, suitable for various situations

### Product certification



## Technical data

### Product drawing

### 3D model

□

### Durability test

Sea level impulse withstanding voltage

2.95kV

### Packaging information

Type of packaging

bag packaging

### Connection capacity

Conductor cross section solid

0.5~1.5mm<sup>2</sup>

Conductor cross section flexible

0.5~1.5mm<sup>2</sup>

feeler gauge a x b / diameter

2.4mm x 1.5mm / 1.6mm

AWG

28~16AWG

|              |        |
|--------------|--------|
| Torque       | 0.2N.m |
| Strip length | 7mm    |

#### Electrical parameters UL

|                   |      |
|-------------------|------|
| Rated voltage (B) | 300V |
| Rated voltage (D) | 300V |
| Rated current (B) | 8A   |
| Rated current (D) | 8A   |

#### Electrical parameters IEC

|                           |       |
|---------------------------|-------|
| Rated voltage             | 250V  |
| Rated current             | 7A    |
| Rated voltage(II/2)       | 250V  |
| Rated surge voltage(II/2) | 2.5KV |

#### Item properties

|                      |                     |
|----------------------|---------------------|
| Connection direction | 0°                  |
| Connection method    | Screw connection    |
| Screwdriver          | Slotted screwdriver |
| screw thread         | M2                  |
| Pitch                | 3.5mm               |
| Number of potentials | 4                   |
| Pluggable or not     | Yes                 |
| Number of rows       | 1                   |

#### Material data

|                             |                           |
|-----------------------------|---------------------------|
| Environmental items         | Compliant with REACH/RoHS |
| Contact material            | Copper alloy              |
| Contact point metal surface | tin-plated                |

|                            |            |
|----------------------------|------------|
| Contact zone metal surface | tin-plated |
| Insulation Materials       | PA66       |
| Shell color                | green      |
| Insulating material group  | I          |
| Flammability rating        | UL94V-0    |

#### Mechanical tests

|                    |                  |
|--------------------|------------------|
| Test Specification | IEC61984/ UL1059 |
|--------------------|------------------|

#### Environmental data

|                                 |  |
|---------------------------------|--|
| Ambient temperature (operation) | -40°C~105°C(depending on derating curve) |
|---------------------------------|--|

#### Accessories

##### Tool

|                |                             |
|----------------|-----------------------------|
| Screwdriver    | 0.4x2.5,Slotted screwdriver |
| Operating tool | /                           |

##### Accessories

|               |   |
|---------------|---|
| Coding strip  | / |
| Bridge        | / |
| Marking strip | / |
| Others        | / |

#### Business data

|                                     |             |
|-------------------------------------|-------------|
| Order number                        | 10010008888 |
| Packing unit                        | 300         |
| Minimum order quantity              |             |
| Products weight (without packaging) | 3.36        |

