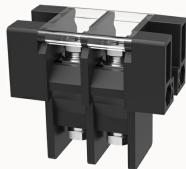


## Overview

### Product information



### DG75-A-12050000214

Up and down transfer terminal, nominal current: 75A. Rated voltage (UL): 600V, rated cross section: 22~4AWG, pitch: 16mm, color: black, contact surface: tin

### Product advantages

- ☒ Screw connection for worldwide use
- ☒ Barrier wiring structure, stable and reliable connection
- ☒ It can meet the high current electrical connection at the power end

### Product certification



## Technical data

### Product drawing

### 3D model

□

### Wiring capacity

torque

5N.m

### Electrical parameters UL

Rated current (B)

75A

Rated current (C)

75A

### Connection capacity

AWG

22~4AWG

### Electrical parameters UL

Rated voltage (B)

600V

Rated voltage (C)	600V
Rated voltage (D)	600V
Rated current (D)	5A

#### Item properties

Type of installation	panel
Pin arrangement	Single row in a straight line
Connection method	Screw connection
Screwdriver	Phillips screwdriver
screw thread	M6
Pitch	16mm
Number of potentials	2
Pluggable or not	no
Number of rows	1

#### Material data

Environmental items	Compliant with REACH/RoHS
Contact material	copper
Contact point metal surface	Nickel plating
Insulation Materials	PBT
Insulating material group	IIIa
Flammability rating	UL94V-0

#### Mechanical tests

Test Specification	UL1059
--------------------	--------

#### Environmental data

Ambient temperature (operation)	-40℃~120℃(depending on derating curve)
---------------------------------	--

Accessories

Business data	
Order number	12050000214
Packing unit	35
Minimum order quantity	/
Products weight (without packaging)	99.6