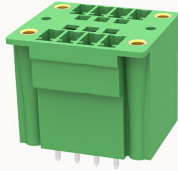


Overview

Product information

**15EDGVHM-3.81-10030000929**

Pluggable Terminal Blocks nominal current 7A. Rated voltage (II/2):
250V, pitch: 3.81mm, Color: green, Contact surface: Tin

Product advantages

- ✓ Universal installation method to ensure a high degree of flexibility in device design
- ✓ Multi-layer wire connection can achieve higher contact density

Product certification



Technical data

Product drawing

3D model

[□](#)

Processing notes

Process

Wave soldering/manual soldering

Electrical parameters UL

Rated voltage (B)

300V

Rated current (B)

8A

Electrical parameters IEC

Rated voltage

250V

Rated current

7A

Rated voltage(II/2)

250V

Rated surge voltage(II/2)

2.5KV

Item properties

Connection direction	90°
Type of installation	PCB welding
Pin arrangement	Double-row in a straight line
Pitch	3.81mm
Number of potentials	8
Pluggable or not	Yes
Number of rows	2

Material data

Environmental items	Compliant with REACH/RoHS
Contact material	Copper alloy
Contact zone metal surface	tin-plated
Insulation Materials	PA66
Insulating material group	I
Flammability rating	UL94V-0

Mechanical tests

Test Specification	IEC60947/UL1059
--------------------	-----------------

Environmental data

Ambient temperature (operation)	-40°C~105°C(depending on derating curve)
---------------------------------	--

Accessories

Tool

Screwdriver	/
Operating tool	/

Accessories

Coding strip	/
Bridge	/
Marking strip	/
Others	15EDG-PWI

Business data

Order number	10030000929
Packing unit	
Minimum order quantity	
Products weight (without packaging)	