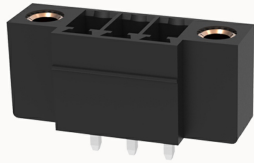


## Overview

## Product information

**15EDGVM-THR-3.5-10030003471**

Pluggable Terminal Blocks  
nominal current 7A, Rated voltage (II/2):  
250V, pitch: 3.5mm, Color: black, Contact surface: Tin

## Product advantages

- ✓ Suitable for SMT welding process
- ✓ The plug direction is perpendicular to PCB, Can meet the needs of different connectors

## Product certification



## Technical data

## Product drawing

## 3D model

[□](#)

## Processing notes

Process

Wave soldering/manual soldering

## Electrical parameters UL

Rated voltage (B)

300V

Rated current (B)

8A

## Electrical parameters IEC

Rated voltage

250V

Rated current

8A

Rated voltage(III/2)

250V

Rated surge voltage(III/2)

2.5KV

Item properties

Connection direction	90°
Type of installation	PCB welding
Pin arrangement	Single row in a straight line
Pitch	3.5mm
Number of potentials	3
Pluggable or not	Yes
Number of rows	1

Material data

Environmental items	Compliant with REACH/RoHS
Contact material	copper
Contact point metal surface	tin-plated
Insulation Materials	High temperature resistant materials
Insulating material group	IIIa
Flammability rating	UL94V-0

Mechanical tests

Test Specification	IEC61984/ UL1059
--------------------	------------------

Environmental data

Ambient temperature (operation)	-40°C~130°C(depending on derating curve)
---------------------------------	--

Accessories

Tool

Screwdriver	/
Operating tool	/

Accessories

Coding strip	/
Bridge	/
Marking strip	/
Others	/

Business data

Order number	10030003471
Packing unit	
Minimum order quantity	
Products weight (without packaging)	