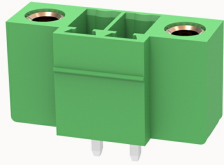


Overview

Product information

**15EDGVM-3.81-10030000962**

Pluggable Terminal Blocks nominal current 7A. Rated voltage (II/2):
250V, pitch: 3.81mm, Color: green, Contact surface: Tin

Product advantages

- ✓ Universal installation method to ensure a high degree of flexibility in device design
- ✓ The plug direction is perpendicular to PCB

Product certification



Technical data

Product drawing

3D model

[□](#)

Processing notes

Process

Wave soldering/manual soldering

Electrical parameters UL

Rated voltage (B)	300V
Rated voltage (D)	300V
Rated current (B)	8A
Rated current (D)	8A

Electrical parameters IEC

Rated voltage	250V
Rated current	7A

Rated voltage(II/2)	250V
Rated surge voltage(II/2)	2.5KV

Item properties

Connection direction	90°
Type of installation	PCB welding
Pin arrangement	Single row in a straight line
Pitch	3.81mm
Number of potentials	2
Pluggable or not	Yes
Number of rows	1

Material data

Environmental items	Compliant with REACH/RoHS
Contact material	Copper alloy
Contact point metal surface	tin-plated
Contact zone metal surface	tin-plated
Insulation Materials	PA66
Insulating material group	I
Flammability rating	UL94V-0

Mechanical tests

Test Specification	IEC61984/ UL1059
--------------------	------------------

Environmental data

Ambient temperature (operation)	-40℃~105℃(depending on derating curve)
---------------------------------	--

Accessories

Tool

Screwdriver	/
Operating tool	/

Accessories

Coding strip	/
Bridge	/
Marking strip	/
Others	15EDG-PWI

Business data

Order number	10030000962
Packing unit	
Minimum order quantity	
Products weight (without packaging)	