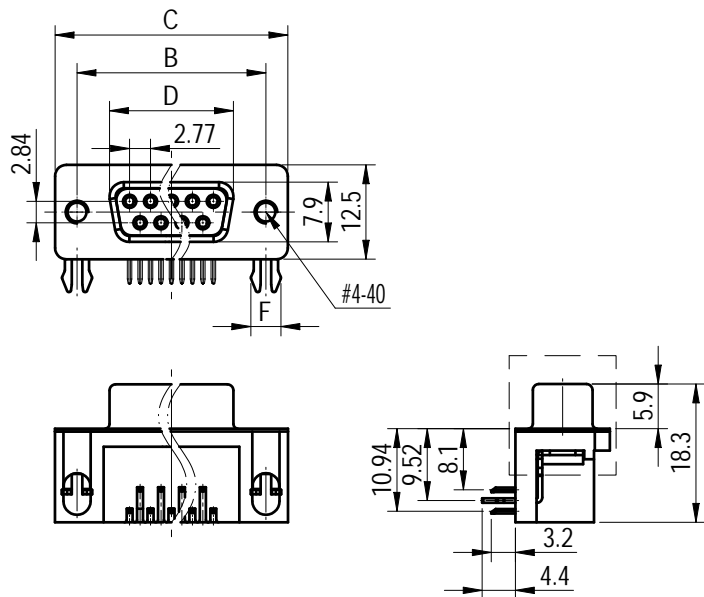
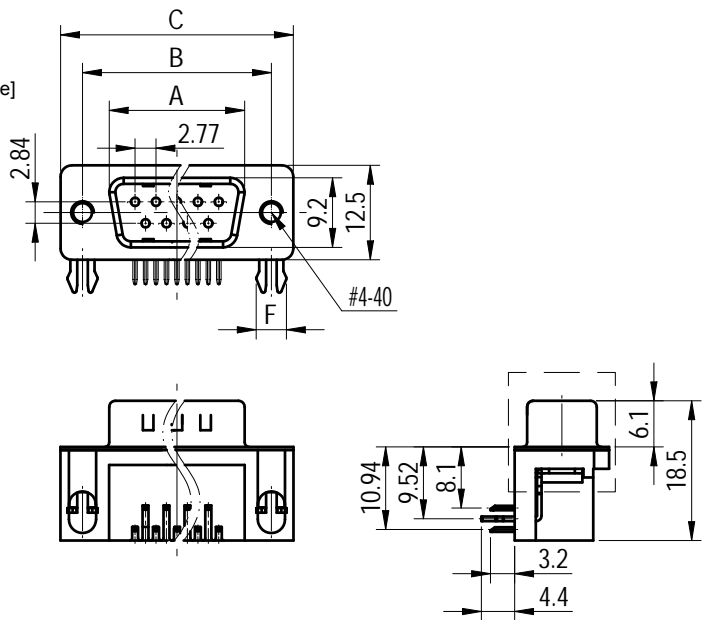


Transfer or duplication of this document as well as the utilization or communication of its contents are prohibited unless explicit authorization is granted. Violations will be liable for compensation. All rights reserved for patent, utility model or design registrations. 除专利等明确授权外, 复制、翻印、分发本文件中的内容, 未经许可均须承担责任。 侵权必究, 侵权必究。

[Female]

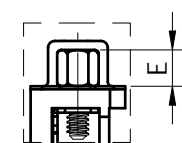


[Male]

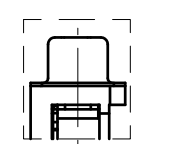


Dimension

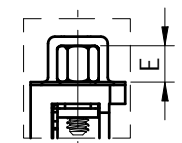
Position	A±0.2	B±0.2	C±0.3	D
9	17.90	24.99	30.80	16.33
15	26.50	33.32	39.14	24.66
25	40.00	47.04	53.04	38.38
37	56.50	63.50	69.32	54.84



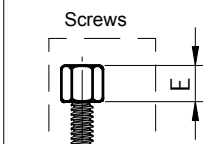
With screw type



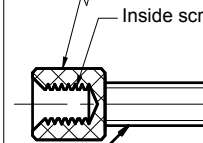
With rivet type



With screw and rivet type



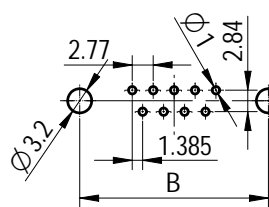
Screws



Inside screw thread

Outside screw thread

Screw figure



Recommend PCB layout  
(Tolerance:±0.05)

NOTES:

- Electrical characteristics:
  - Contact resistance: 20mΩ Max. Initial.
  - Dielectric withstanding voltage: 500V AC(rms) for 1 minute.
  - Insulation resistance: 1000MΩ Min.
- Environment characteristics:
  - Temperature range: -40°C~+105°C.
- Materials:
  - Insulator:PBT+Glass fiber
  - Shell:Steel
  - Contact:Copper alloy
- Product number code:

DG1037 - XXXXX - XXX

- Screw materials
- F: Steel C: Copper alloy
- Board lock materials
- F: Steel C: Copper alloy
- Insulator materials
- 0: PBT UL94 V-0
- Screw DIM. E
- 4: 4.80mm 5: 5.80mm
- 6: 4.80mm(Inside thread M2.6\*0.45p, outside thread unc#4-40)
- M3: 4.80mm(Inside thread M3.0, outside thread unc#4-40)
- Board lock DIM. F
- 7: 3.70mm
- Contact plating
- T: Selective gold flash
- Si: Full gold flash
- Color of housing
- K: Black
- Screw type
- A: With screw type B: With rivet type
- C: With screw and rivet type
- D: Rivet type with screws in bulk package
- E: With rivet type(N/A Thread)
- Shell plating
- N: Nickel
- Connector type
- M: Male F: Female
- No. of contact
- 09,15,25,37



(Series Image-Reference Only)

GENERAL TOLERANCE			MATERIAL:	SURFACE/COLOR:			
X. ±0.60	X ±0.38		MAT NO./REV: / 00	MAT STATUS: 批量			
XX ±0.25	APPD: 兰春华 2023.07.31	NAME	DG1037-XXXXXXXX-XXX				
	CHKD: 陈招 2023.07.31						
REV	ECN	DRFT: 唐本恒 2023.07.28	DRAWING NO.	TYPE	DRAWING STATUS	SCALE	SHEET
00		唐本恒 2023.07.28	200035044	CUSTOMER DRAWING	已发布	1:1	1/1

REV	ECN	DESCRIPTION	DRFT	DATE
00			唐本恒	2023.07.28